

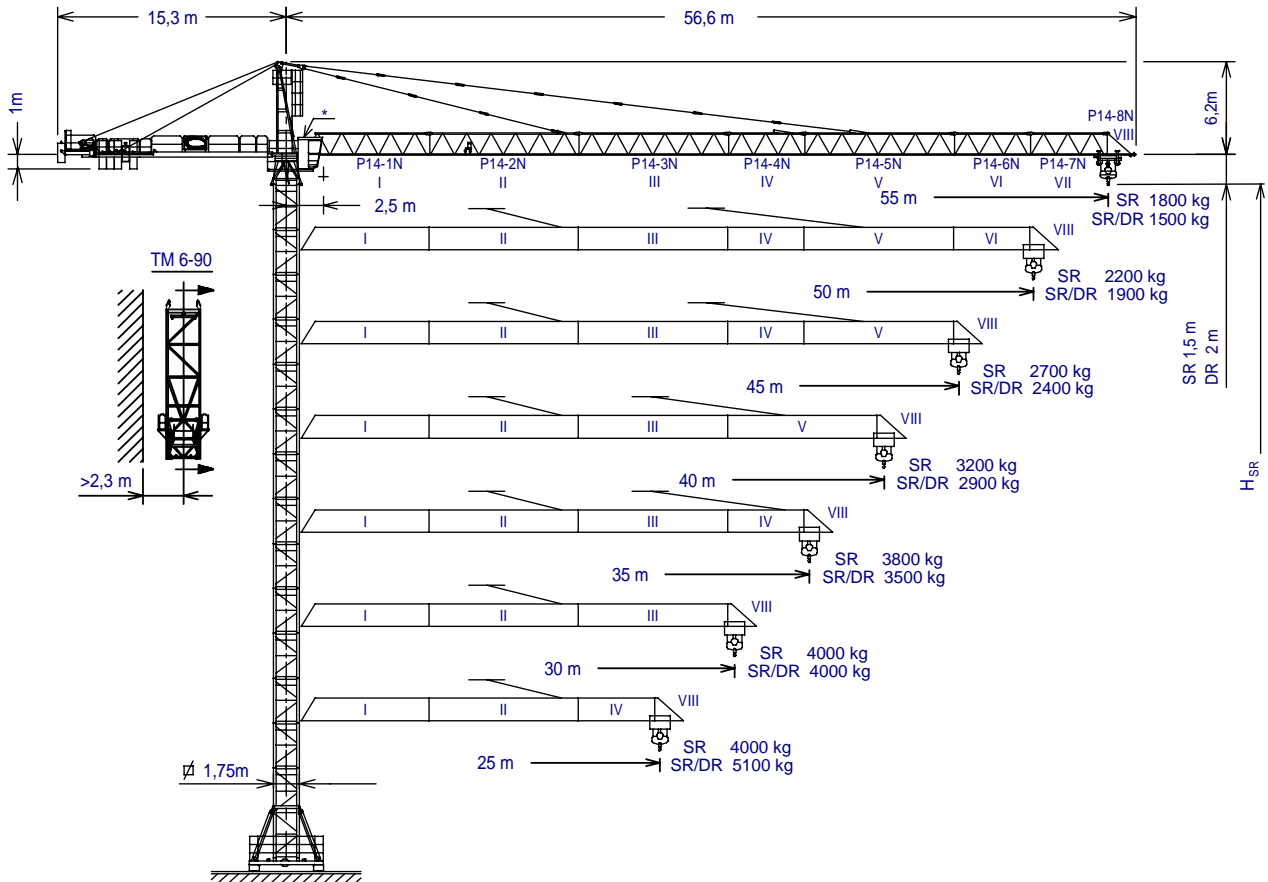
# GRUA TORRE TOWER CRANE

# J110N

UNE 58-101-92  
FEM 1001

SISTEMA DE CALIDAD CERTIFICADO SEGUN  
QUALITY ASSURANCE SYSTEM CERTIFIED ACCORDING TO

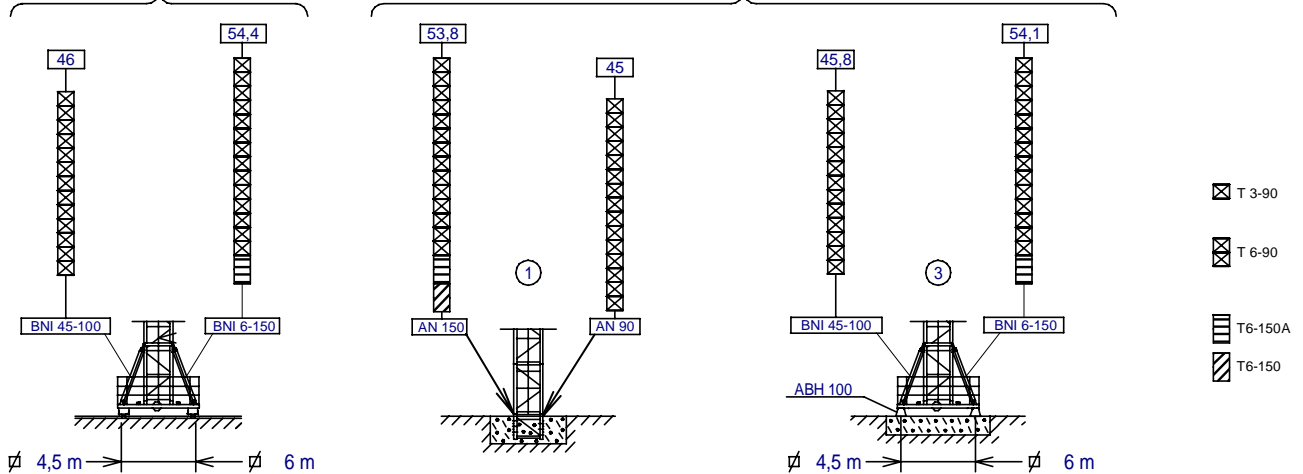
UNE-EN-ISO 9001



<p><math>H_{DR} = H_{SR} - 0,5</math></p> <p>*Cabina opcional *Optional cabin</p> <p><math>H_{SR} =</math> Altura máxima bajo gancho sin arriostar (m) Maximum height under hook without fastening (m)</p>	TM 6-90	145.35.000	ABH 100	201.23.000
	T3-90	133.32.000	P14-1N	145.40.000
	T6-90	133.31.000	P14-2N	145.41.500
	T1-6-90	133.30.000	P14-3N	145.42.000
	T6-150	161.31.000	P14-4N	145.43.000
	T6-150A	161.31.300	P14-5N	145.44.000
	AN 90	133.21.000	P14-6N	145.45.000
	AN 150	161.21.000	P14-7N	145.46.000
	BNI 45-100	145.20.500	P14-8N	145.47.000
	BNI 6-150	161.20.000		

( $H_{SR}$ ) TRASLACION / TRAVELLING

( $H_{SR}$ ) ESTACIONARIA / STATIONARY



**JASO EQUIPOS DE OBRAS Y CONSTRUCCIONES, S.L.**

Fecha / Date: 02-03-2009

Reservado el derecho a modificaciones sin previo aviso / Subject to modification, without previous warning


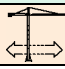
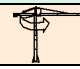
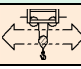
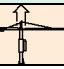
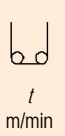
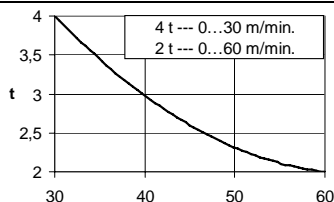
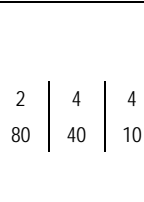
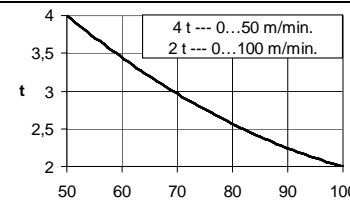

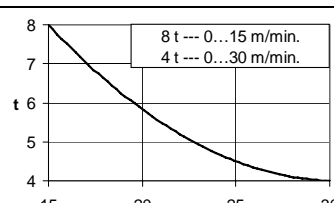
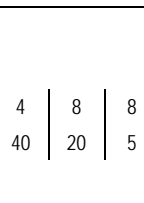
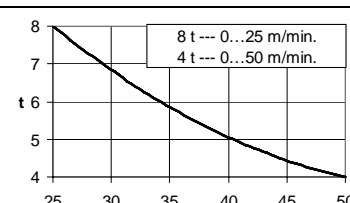
Declinamos toda responsabilidad derivada de la información proporcionada / This information is supplied without liability

SR (kg)		Cargas máximas / Maximum loads SR 4000						4000 kg a
PLUMA JIB	Alcance del gancho (m) / Hook reach (m)							
	55	50	45	40	35	30	25	
55 m	1800	2025	2300	2640	3080	3665	4000	27,7 m
50 m	-----	2200	2495	2860	3330	3960	4000	29,7 m
45 m	-----	-----	2700	3090	3595	4000	4000	31,8 m
40 m	-----	-----	-----	3200	3720	4000	4000	32,8 m
35 m	-----	-----	-----	-----	3800	4000	4000	33,4 m
30 m	-----	-----	-----	-----	-----	4000	4000	30 m
25 m	-----	-----	-----	-----	-----	-----	4000	25 m

SR / DR (kg)		Cargas máximas / Maximum loads SR/DR - 4000/8000								4000/8000 kg a
PLUMA JIB	Alcance del gancho (m) / Hook reach (m)									
	55	50	45	40	35	30	25	20	15	
55 m	1500	1715	1980	2305	2730	3290	4000/4080	4000/5260	4000/7235	25,4/13,7 m
50 m	-----	1900	2185	2540	2990	3600	4000/4450	4000/5725	4000/7850	27,4/14,7 m
45 m	-----	-----	2400	2780	3270	3925	4000/4840	4000/6210	4000/8000	29,5/15,8 m
40 m	-----	-----	-----	2900	3405	4000/4085	4000/5030	4000/6450	4000/8000	30,5/16,4 m
35 m	-----	-----	-----	-----	3500	4000/4190	4000/5160	4000/6615	4000/8000	31,2/16,8 m
30 m	-----	-----	-----	-----	-----	4000	4000/4930	4000/6325	4000/8000	30/16,1 m
25 m	-----	-----	-----	-----	-----	-----	4000/5100	4000/6540	4000/8000	25/16,6 m

CARACTERISTICAS DE MECANISMOS  
MECHANISMS FEATURES

Mecanismos sin VF: Para 480V Potencias y velocidades: 20% más  
Mechanisms without VF: For 60Hz Powers and speeds: 20% more

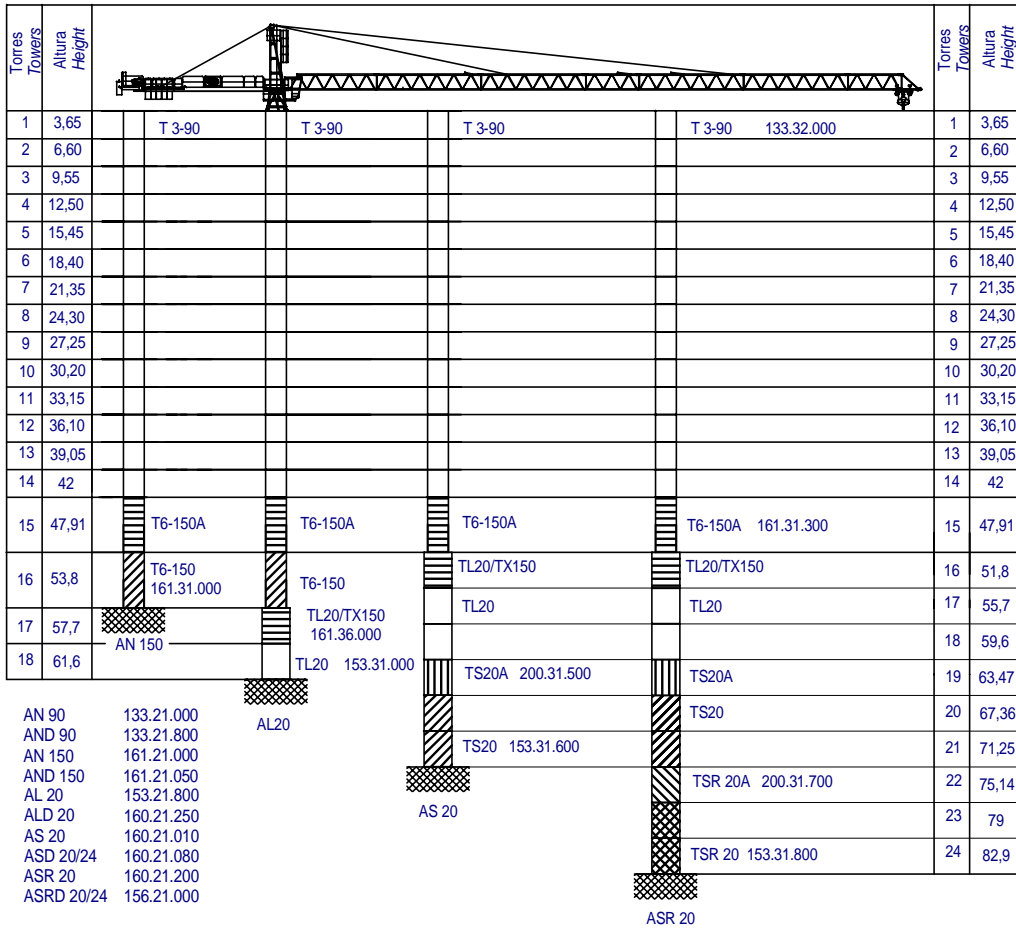
*opcional *optional							
	EC3360VF	*EC4880	*EC60100VF	TG1125VF	OG1508VF	TC465VF	TH1210
 t m/min				0...25 m/min	0...0,16 0,16...0,4 0,4...0,8 r/min	0...15 15...32 32...65 m/min	1 m/min
 t m/min							
kW	24,3	35,3	44,1	2 x 4	2 x 5,5	3	9,2
Máx. recor. gancho Maximum hook course	SR 272m DR 136m	SR 292m DR 146m	SR 468m DR 234m	Potencia necesaria con ... Power required with ... EC3360VF = 46,3 kW EC4880 = 57,3 kW EC60100VF = 66,1 kW			
Importante: A medida que la altura bajo gancho aumenta, disminuye la capacidad de carga de la grúa. Para alturas superiores a la autoestable consultar a JASO EQUIPOS DE OBRAS Y CNES, S.L. Important: When the height under hook increases, the hoisting load will decrease. If the height under hook is higher than the free standing height, consult to JASO EQUIPOS DE OBRAS Y CNES, S.L.							



DENOMINACION / DENOMINATION		L (m)	A (m)	H (m)	P / W (kg)
Torre Tower section	T3-90	3,190	1,818	1,818	1200
	T6-90	6,140	1,818	1,818	2250
	T16-90	6,136	2,095	2,095	2500
	T6-150A	6,175	1,870	1,870	2760
	T6-150	6,175	1,870	1,870	2760
	T16-150	6,175	2,190	2,190	3535
Torre asiento de pista. Base punta de torre y orientación Slewing table, Tower head base and Slewing mechanism		3,390	2,060	2,150	3400
Punta de torre Tower head		6,090	1,915	1,930	1520
Conjunto asiento pista + punta torre + orientación Slewing table assembly + tower head + slewing mechanism		8,370	2,615	2,720	4920
Tramo de pluma Jib section	P14-1N (I)	8,665	1,366	1,698	1040
	P14-2N (II)	10,160	1,226	1,630	1270
	P14-3N (III)	10,160	1,226	1,630	840
	P14-4N (IV)	5,270	1,226	1,630	495
	P14-5N (V)	10,160	1,226	1,630	695
	P14-6N (VI)	5,260	1,226	1,550	325
	P14-7N (VII)	5,270	1,226	1,545	295
	P14-8N (VIII)	2,095	1,366	1,740	230
Polipasto Hook assembly	SR	0,990	0,200	1,067	214
	DR	1,040	0,200	1,725	347
Tirante sostén pluma Jib support tie	Largo / Long	5,30	0,70	1,750	650
	Corto / Short	4,90	0,445	1,750	450
Carro Crab	SR	2,005	1,665	1,525	225
	DR	2,070	1,775	1,550	335
Contrapluma con plataformas Counterjib with platforms		11,950	1,490	0,709	2495
Soporte y elevación Support and hoisting	EC3360VF	2,655	2,315	1,750	2160
	EC4880	2,655	2,315	1,750	2480
	EC60100VF	2,655	2,315	1,750	2625
Plataforma y cabina Platform and cabin		3,760	1,650	2,340	820
Contrapeso Counterweight	Grande / Big	1,080	0,500	2,025	2360
	Pequeño / Small	1,080	0,500	1,305	1500
Lastre Ballast		3,800	0,580	1,500	6000
Estructura torre de montaje Jacking cage structure		10,310	2,420	2,300	3300

LASTRES INFERIORES / LOWER BALLASTS			Para alturas intermedias tomar el lastre correspondiente a la altura superior For intermediate heights take the ballast corresponding to the higher height			
Altura bajo gancho (m) / Height under hook (m)			19,5	31,3	40,1	46
Número de piedras a colocar Number of ballast blocks to put	Piedras de 6000 kg Blocks of 6000 kg	BNI 45-100	6	8	10	12
Altura bajo gancho (m) / Height under hook (m)			25	36,8	42,7	54,4
Número de piedras a colocar Number of ballast blocks to put	Piedras de 6000 kg Blocks of 6000 kg	BNI 6-150	6	8	10	16





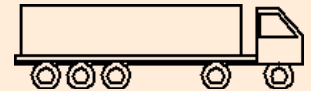
Las configuraciones de torre representadas son recomendaciones de montaje que pueden ser utilizadas en cualquier instalación. Cada tramo de torre, en la posición indicada, puede asimismo ser utilizado como elemento inferior de torre en grúa autoestable estándar con su correspondiente altura bajo gancho. Configuraciones de torre para mayores alturas bajo gancho o con diferentes tramos de torre no representadas aquí, pueden ser también posibles aunque deben ser verificadas y confirmadas por escrito por nuestro departamento técnico en cada caso individual y antes de que empiece la instalación de la grúa.

The represented tower configurations are assembly recommendations that can be used in any installation. Each tower section in its indicated position can also be used as the lower element of the mast tower in standard freestanding crane with its corresponding height under hook. Tower configurations not shown here, with greater heights under hook or with different tower sections, are also possible but must be checked and confirmed in writing by our technical department in every individual case and before crane installation starts.

Transporte grúa de 46 m bajo gancho con traslación, cabina y sin lastre

46 m under hook crane transport with travelling base, cabin and without base ballast

En camiones / In trucks

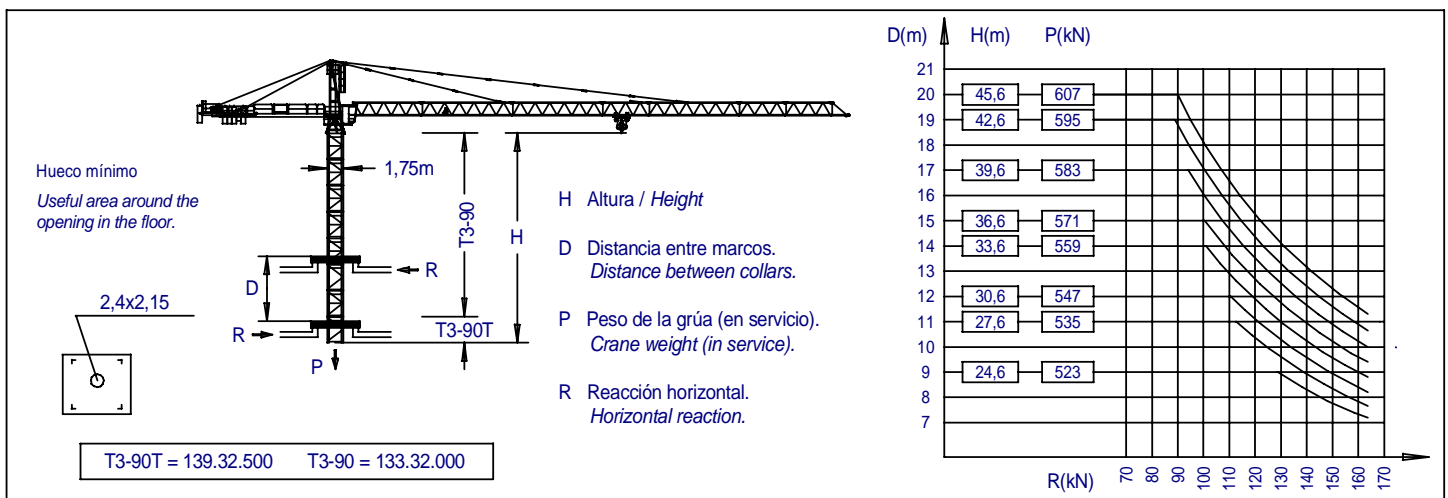


6 unidades / 6 units

En contenedores / In containers

**HIGH CUBE 40'**

6 unidades / 6 units



**JASO EQUIPOS DE OBRAS Y CONSTRUCCIONES, S.L.**

Ctra./Rd. Madrid - Irún Km. 415  
20.213 IDIAZABAL [Gipuzkoa]  
ESPAÑA / SPAIN  
P.O. Box, 23 - 20.200 BEASAIN

Tel. +34 943 - 18 70 00  
Fax. +34 943 - 18 70 20  
E-mail: jaso@jaso.com  
http://www.jaso.com

Fecha / Date: 02-03-2009

DELEGACION / DELEGATION

Reservado el derecho a modificaciones sin previo aviso / Subject to modification, without previous warning  
Declinamos toda responsabilidad derivada de la información proporcionada / This information is supplied without liability